



MEDIC
MOBILE™

Reducing Maternal And Neonatal Mortality

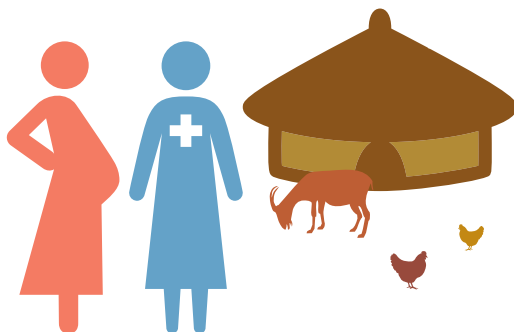


Antenatal care
Postnatal care
Family planning

Reducing Maternal And Neonatal Mortality

Antenatal care

- Remotely register pregnancies
- Track on-time and missed antenatal care visits
- Guide health workers through visit workflows
- Screen for high-risk pregnancies and danger signs
- Refer women to facilities for safe births



Postnatal care

- Remind health workers about postnatal care visits
- Track on-time and missed postnatal care visits
- Screen for danger signs for mothers and newborns
- Guide health workers through postnatal care visits



Family planning

- Assess demand for family planning services
- Guide health workers and clients through method selection
- Guide health workers to provide on-site delivery of supplies
- Refer clients to facilities
- Ensure timely follow-up visits

