



**MEDIC
MOBILE™**

Medic Mobile is a non-profit organization that builds mobile tools to improve health in underserved communities around the world. Medic Mobile has worked with over 60 partners across 23 countries in Africa, Asia, Latin America, and the United States. Our software supports a network of more than 14,000 health workers, improving health systems for over one million families.

To get started with Medic's Standard Package

Contact us at:

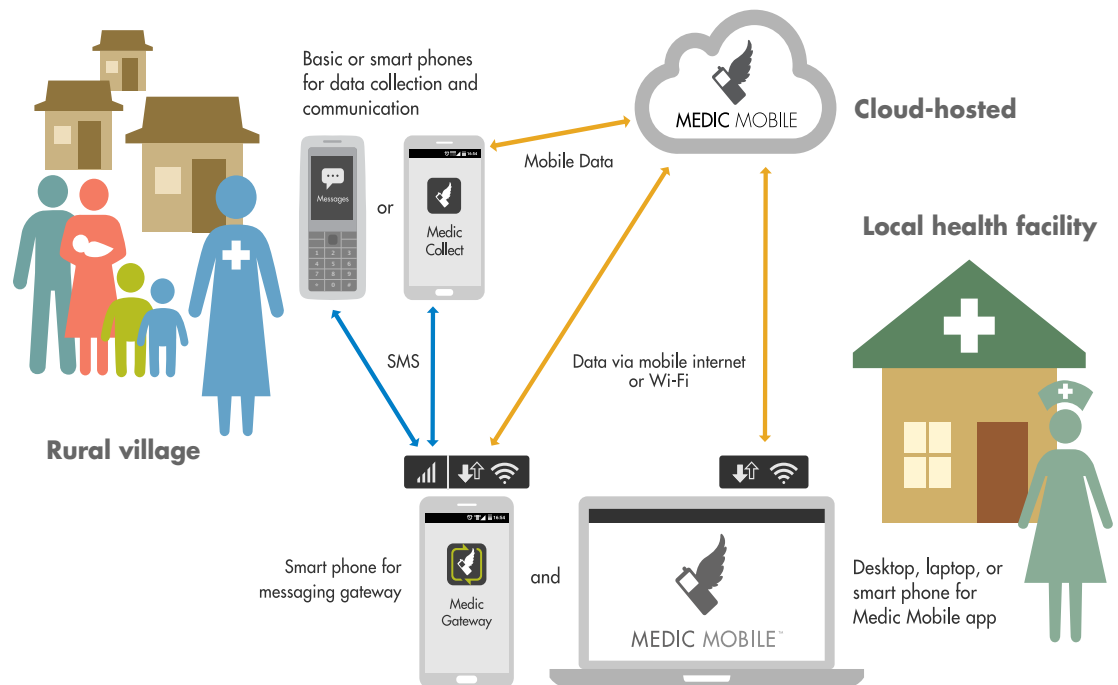
standard@medicmobile.org

or visit us at:

medicmobile.org

Medic Mobile Standard Package

Medic Mobile's new Standard Package is designed to improve antenatal care coordination in last-mile settings. It brings together our extensive experience in designing and implementing antenatal care coordination workflows with partners all over the world into an open-source, hosted platform. The Standard Package contains tools, resources, and support designed for community-based care and can be implemented by even the smallest organizations and clinics in challenging settings.



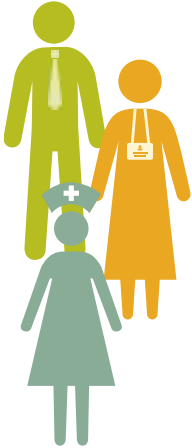
The Standard Package includes:

- Cloud-hosted and pre-configured version of the Medic Mobile application
- Simple-to-use mobile and web tools for facility staff and community health workers
- Medic Mobile's SMS messaging gateway application
- Step-by-step implementation and training guides
- Reference cards for users
- Program monitoring guidelines and dashboard
- Free impact and activity reports
- Speedy, remote support from the Medic Mobile team
- Invitation to a community of practitioners



With this tool, community health workers (CHWs) can send SMS from basic phones or smartphones to:

- Register people in their communities and create profiles for longitudinal care
- Register every pregnancy in their communities, with or without Last Menstrual Period
- Receive automated reminders about antenatal care visits at 12, 24, 32, and 36 weeks
- Receive upcoming delivery reminders at 38 and 40 weeks, and delivery confirmation reminders at 42 and 44 weeks
- Report danger signs to clinical teams
- Coordinate with clinics to ensure delivery in facilities with skilled birth attendants



Facility-based staff, including CHW Supervisors, Nurses and Nurse Managers, can access and use the Medic Mobile application on a computer, laptop, netbook, Android phone, or tablet to:

- See when new people are registered
- See submitted reports for patients and monitor activity
- See profiles and history for the patients managed by CHWs
- View priority tasks for overdue antenatal care visits and other events
- Perform actions, such as adding visits or reporting on deliveries
- Message with individual community health workers or groups to coordinate care

Key features include:

- People-centered workflows: Case management and care coordination for women over time and across places.
- Works offline: Use the application without an Internet connection and synchronize when connectivity is available (ideally at least once a week).
- Powerful in-app analytics: Monitor key activity and impact metrics in real-time such as number of active pregnancies and births this month.
- Multiple devices: Basic phones or Android smartphones for mobile data collection, and tablets, laptops or desktop computers to run the web application.
- Multiple languages: Interact with the system in English, French, Spanish, Swahili, Bahasa Indonesia or Hindi.

Setting up and running Medic Mobile's Standard Package requires:

 <p>A laptop or desktop computer, netbook or Android tablet with access to internet connectivity (at least once a day) for facility-based staff to access the application.</p>	 <p>An Android phone with stable and continuous internet connectivity to run Medic Gateway, which syncs data submitted via SMS to the Medic web application.</p>
 <p>A basic mobile phone for every health worker participating in the intervention to send and receive SMS such as registration SMS and reminder SMS. In future platform updates, health workers will also be able to use smartphones to submit forms via data or SMS.</p>	 <p>A reliable power supply</p>